



**Tightening automation.**  
Only excellent solutions.



**Circular feeders**

**Fiam**

PEOPLE AND SOLUTIONS

# CIRCULAR FEEDERS

Circular feeders are fundamental instruments for semi-automatic or automatic tightening systems where continuous screw feeding is required.

These solutions can be adapted to many applications also with different working conditions; materials used for the feeders have peculiar features, like for instance the adiprene wear resistant material with which the bowl is coated, ensure high reliability over time and ensure sound-proof working environments.

**Productivity is ensured by the high capacity of the feeders;** two models with different feeding capacity are available.

**CUSTOMISED AND COMMISSIONED**  
**C&C**  
 DESIGNED AND BUILT FOLLOWING CUSTOMER SPECIFICATIONS, IT IS THOROUGHLY COMMISSIONED IN ORDER TO GUARANTEE ITS PERFECT PERFORMANCE

| Component | Model   | Description     |
|-----------|---------|-----------------|
| 1         | ALC 150 | Circular feeder |
| 2         | ALC 300 | Circular feeder |

## TECHNICAL FEATURES

|  |   |
|--|---|
| <b>VIBRATING BASE</b>                            | Ø 150 mm (mod. ALC 150)<br>Ø 300 mm (mod. ALC 300)  |
| <b>ELECTRIC POWER</b>                            | 220 V 50 Hz - 110 V 60 Hz   |
| <b>FREQUENCY OF VIBRATION</b>                    | 100 Hz  |
| <b>ALUMINIUM BOWL COATED WITH ADIPRENE</b>       | Ø 245 mm (mod. ALC 150)   |
| <b>STAINLESS STEEL BOWL COATED WITH ADIPRENE</b> | Ø 360 mm (mod. ALC 300)   |
| <b>ROTATION</b>                                  | clockwise   |
| <b>FEEDING CAPACITY</b>                          | max 100 screws/min. (for medium screw)  |
| <b>SCREW OUTLET DUCT</b>                         | (F) tangential  |
| <b>SCREWS CAPACITY</b>                           | 1 litre (mod. ALC 150)<br>1,5 litre (mod. ALC 300)<br>(depending on the screw dimensions) |
| <b>WEIGHT</b>                                    | 14,5 Kg (mod. ALC 150)<br>35,4 Kg (mod. ALC 300)  |
| <b>ANTI-VIBRATION STEM</b>                       |   |
| <b>SELF-EXTINGUISHING POWER CABLE</b>            |   |



The photo shows an application of Fiam ALC feeder

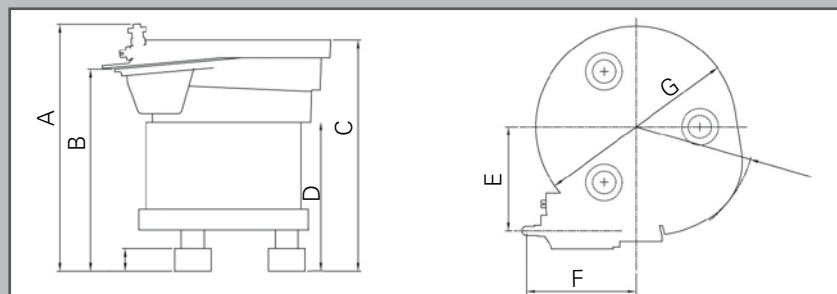
Since the feeder is customised and adjusted on customer screw, in case of order it is necessary to avail of screws for customizing it (1500/2000 screws).

## RECOMMENDED SCREW TOLERANCE PARAMETERS FOR A PROPER PERFORMANCE OF THE EQUIPMENT

|                                      |                                   |   |
|--------------------------------------|-----------------------------------|---|
| <b>0,25 mm on the head diameter</b>  | <b>1,5 mm on the shank length</b> | <b>0,10 mm on the shank/head eccentricity</b>   |
| <b>0,10 mm on the shank diameter</b> | <b>0,20 mm on the head height</b> | <b>0,10 mm on the imprint/head eccentricity</b> |

## INDICATIVE DIMENSIONS (mm)

| Model          | A   | B   | C   | D   | E   | F   | G   |
|----------------|-----|-----|-----|-----|-----|-----|-----|
| <b>ALC 150</b> | 270 | 221 | 230 | 140 | 114 | 120 | 245 |
| <b>ALC 300</b> | 330 | 285 | 320 | 200 | 195 | 170 | 350 |



For maintenance, it is recommendable not to use magnets to remove screws from the bowl: by doing so, there is the risk to magnetize the bowl and, consequently, the screws and compromise bowl feeder performance.

# Fiam

PEOPLE AND SOLUTIONS

**Fiam Utensili Pneumatici Spa**  
 Viale Crispi 123 - 36100 Vicenza - Italy  
 Tel. +39.0444.385000 - Fax +39.0444.385002  
 customerservice@fiamairtools.com  
 www.fiamairtools.com

Quality Management  
System Certificate



Environmental Management  
System Certificate

